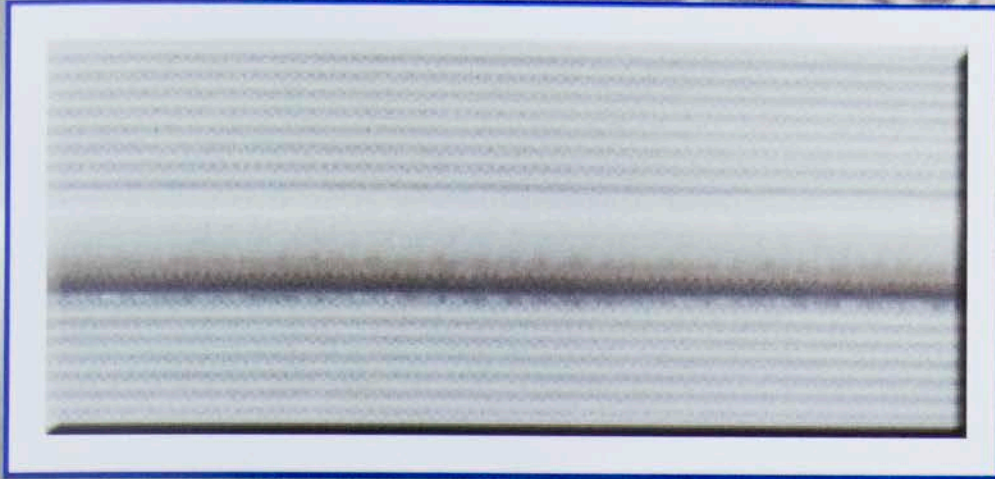


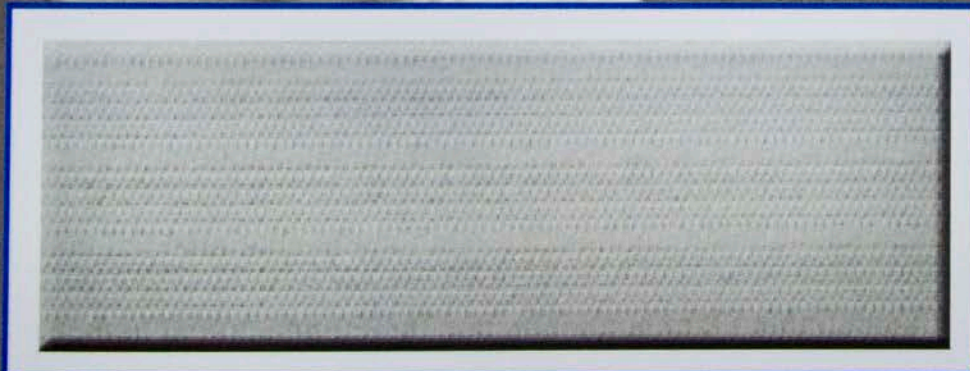
# Athletic & Team Wear and Equipment



**818**  
**Drawcord Elastic**  
**1.25", 1.5", 2"**  
**Black - Black Cord, White - White Cord**



**814**  
**Drawcord Elastic**  
**1.25", 1.5", 2"**  
**Black - Black Cord, White - White Cord**

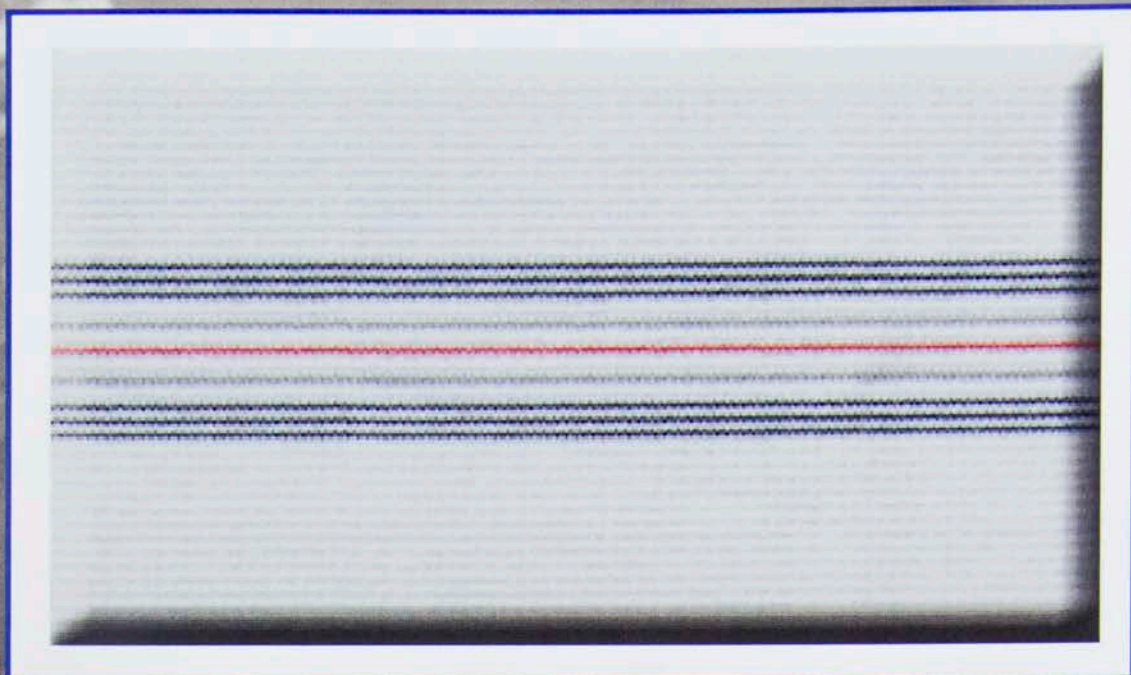


**812**  
**Underwear Waistband**  
**1 5/16"**  
**White**



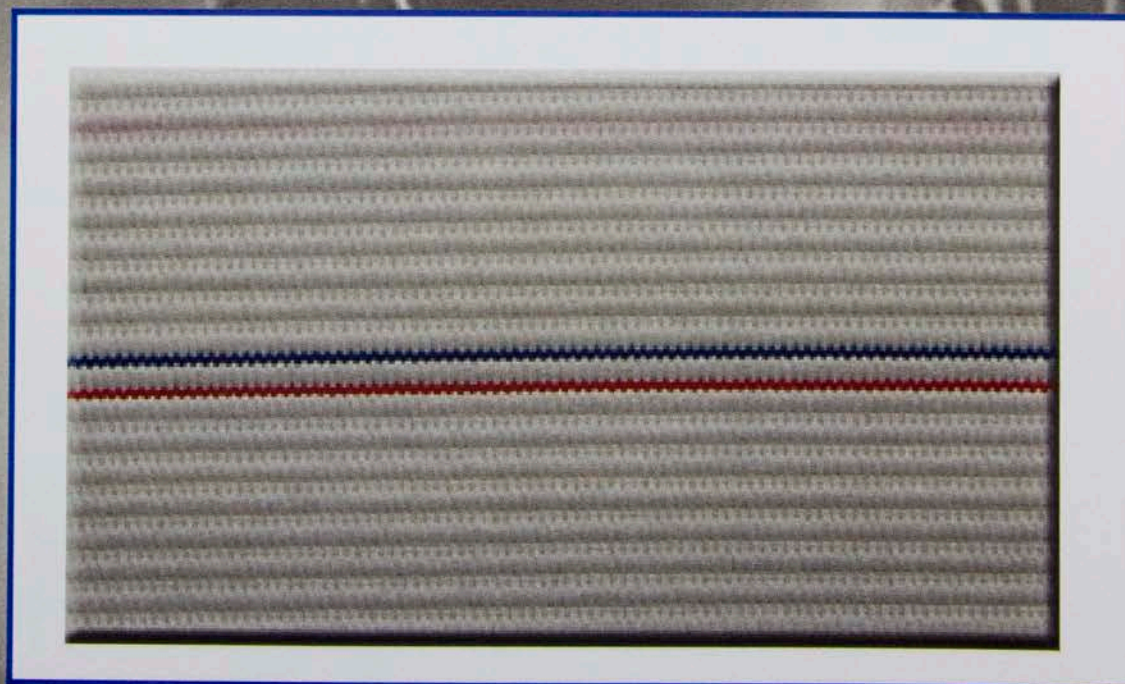
# Athletic & Team Wear and Equipment

776  
Supporters  
3"  
Multi



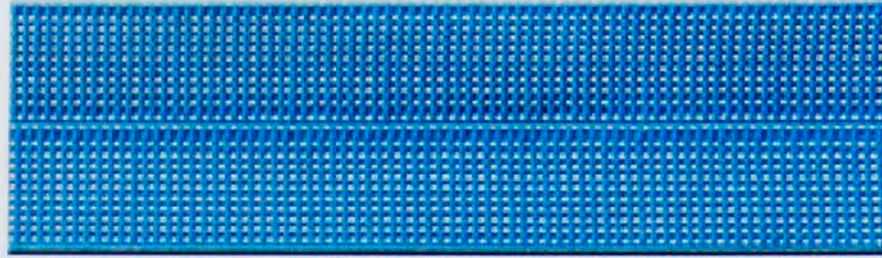
803  
Supporters  
3"  
Blue Stripes

675  
Supporters  
2 7/8"  
Multi





# Athletic & Team Wear and Equipment



6026  
Woven Foldover  
1"  
Black, Colors

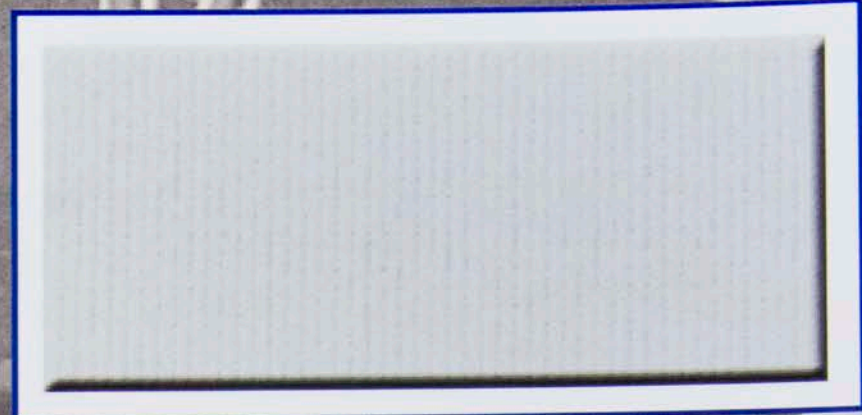


900  
Knitted Foldover  
1"  
Black



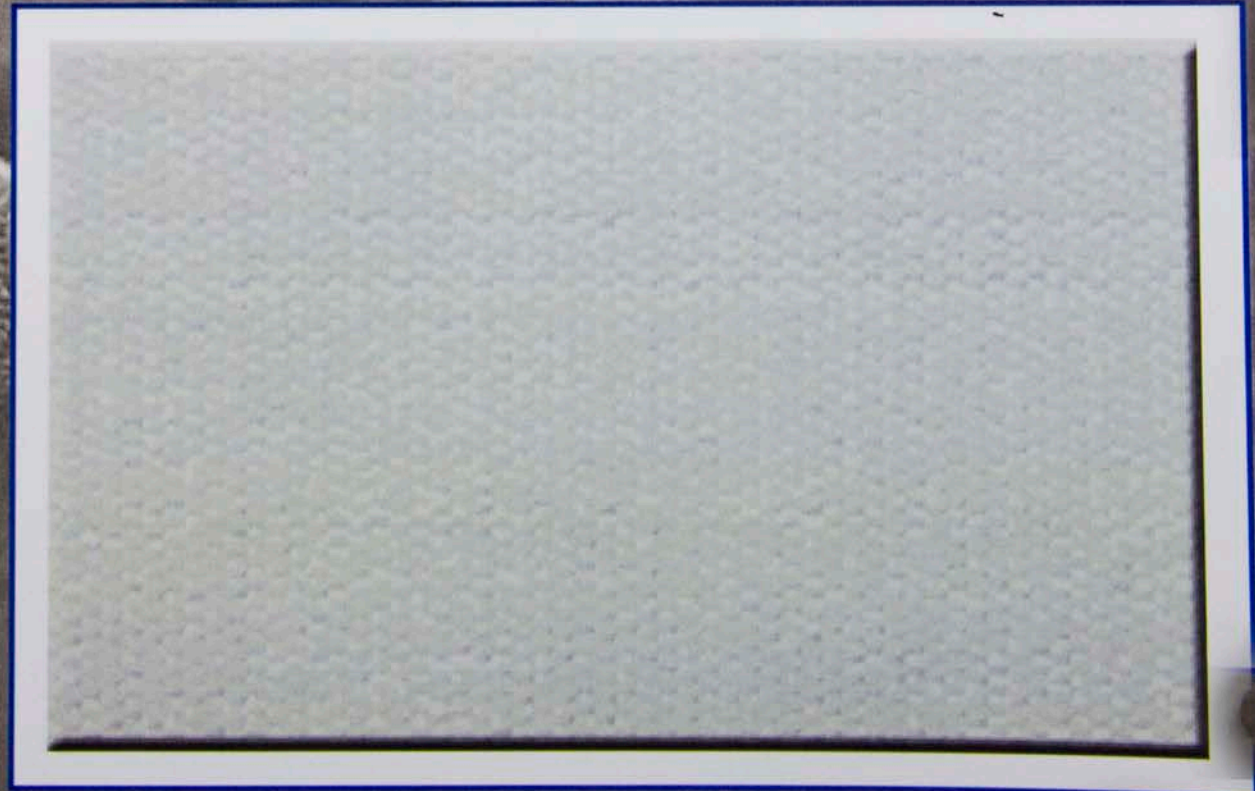
# Athletic & Team Wear and Equipment

896  
Plush Elastic - Ice Packs  
1.5", 2", 3"  
White



775  
Plush Elastic  
3"  
White

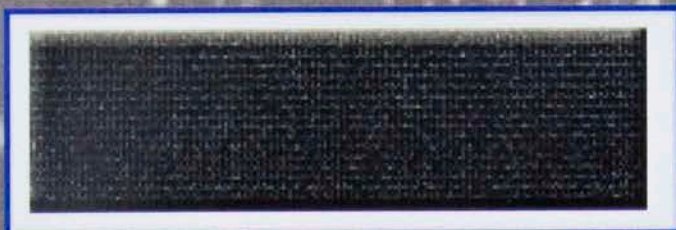
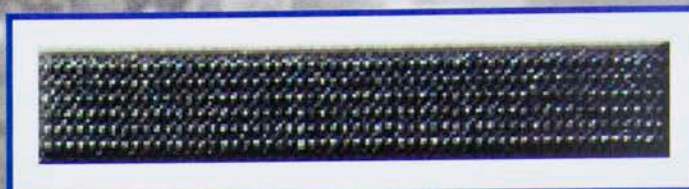
823  
Plush Elastic  
3", 6"  
White



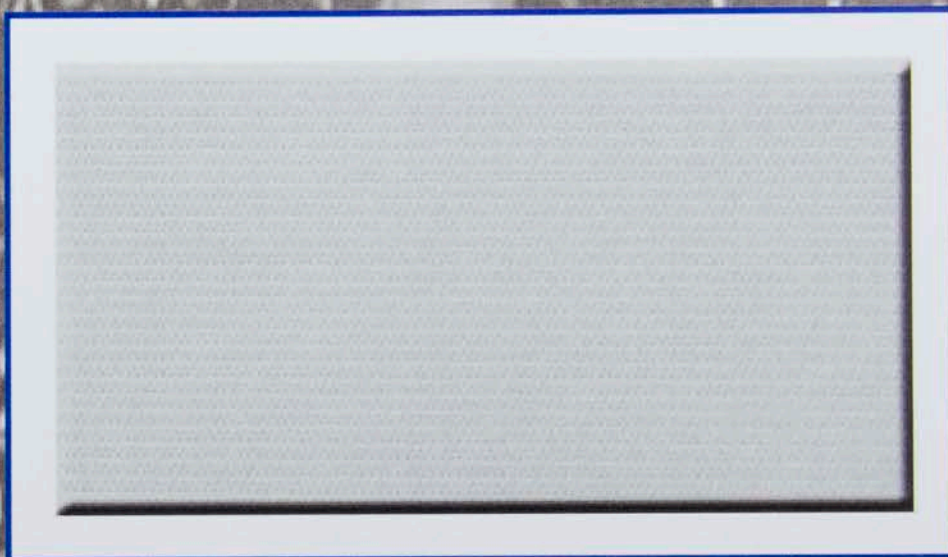


# Athletic & Team Wear and Equipment

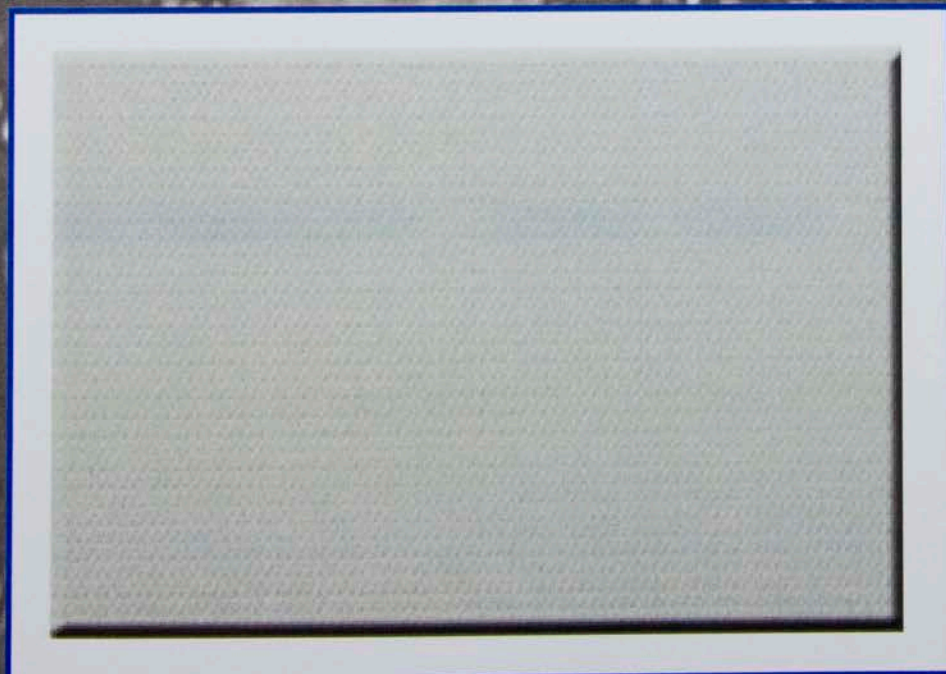
1041  
Knitted Heavy Duty Elastic  
1/4", 3/8", 1/2"  
White, Black



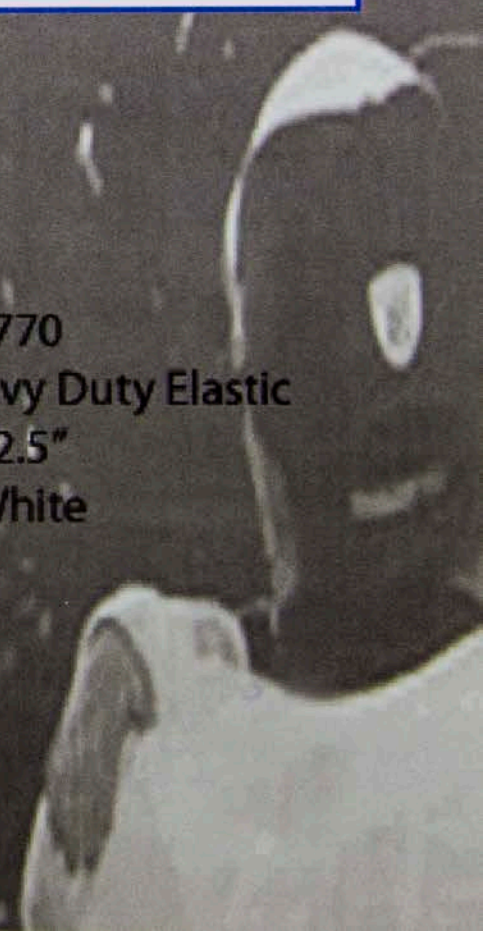
767  
Woven Heavy Duty Elastic  
3/4", 1", 1 1/4", 1 1/2", 2"  
White, Black



771  
Knitted Heavy Duty Elastic  
2"  
White



770  
Knitted Heavy Duty Elastic  
2.5"  
White

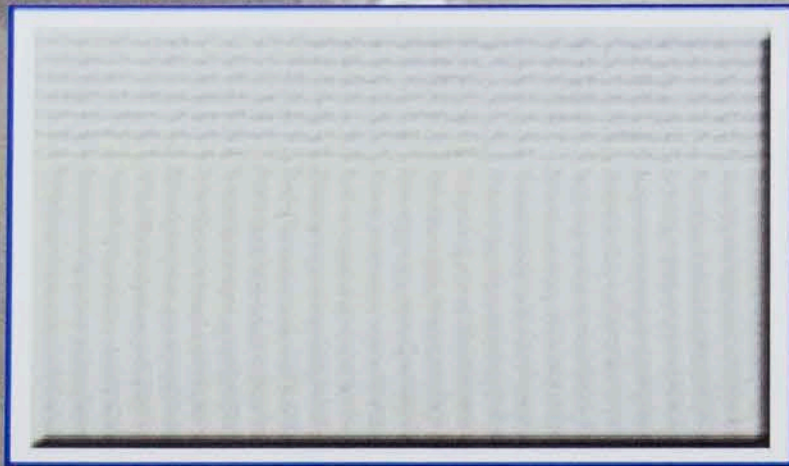




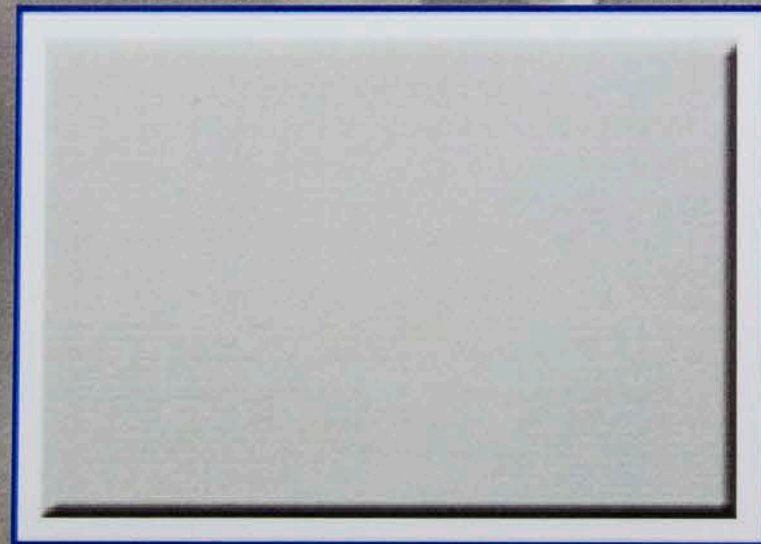
# Athletic & Team Wear and Equipment



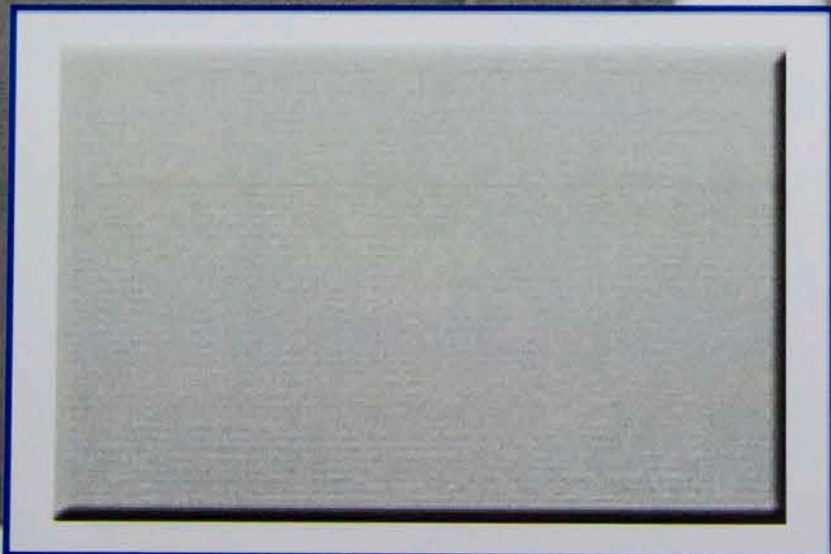
6135  
Woven Waistband  
2.5"  
White



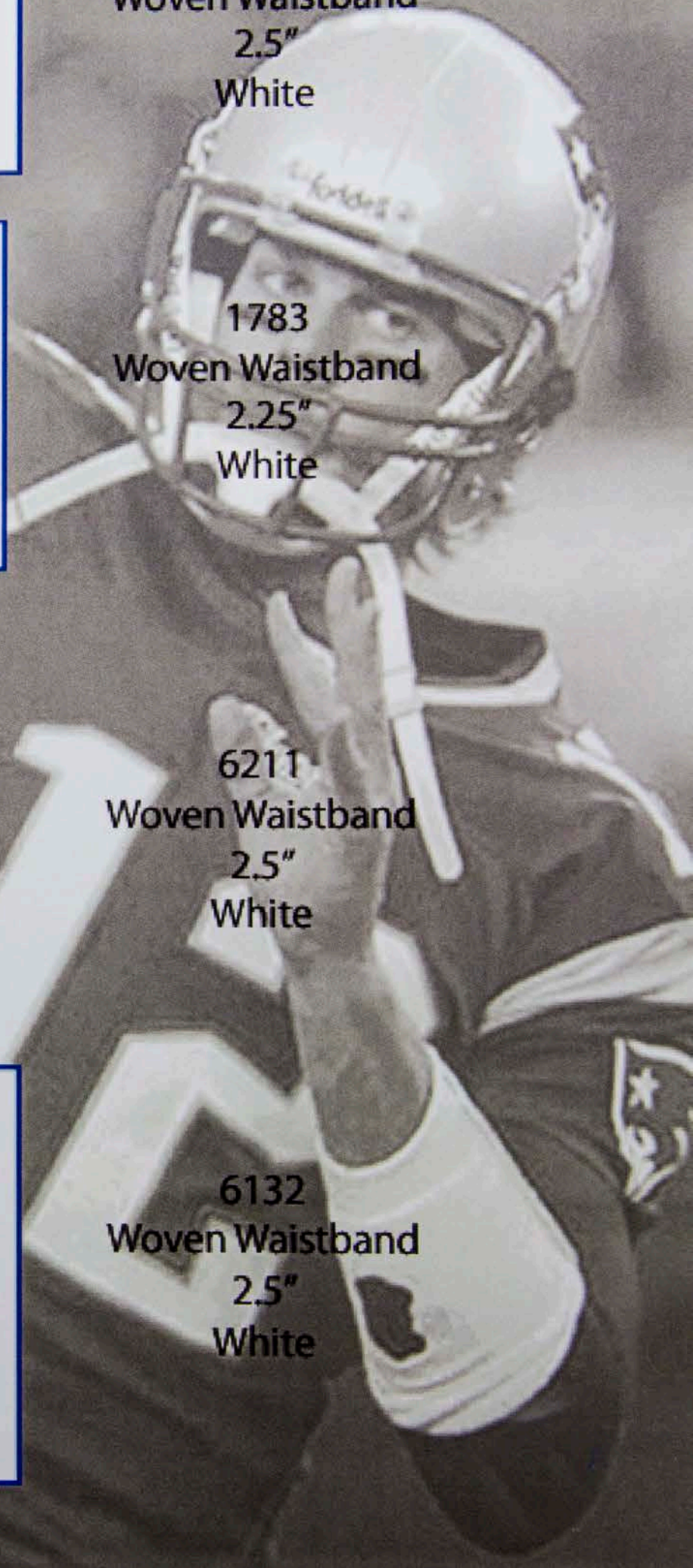
1783  
Woven Waistband  
2.25"  
White



6211  
Woven Waistband  
2.5"  
White



6132  
Woven Waistband  
2.5"  
White





# Athletic & Team Wear and Equipment



Jacquard Elastic & Webbing  
3/4" - 1.5"

Mutronic Elastic & Webbing  
2" - 3"



# Athletic & Team Wear and Equipment



514 B  
Weight Lifting Knee Wrap  
3"  
Black/Red, Black/Blue, Black/Yellow



521  
Weightlifting Knee Wrap  
3"  
Black/Blue, Red, Gold



# Athletic & Team Wear and Equipment



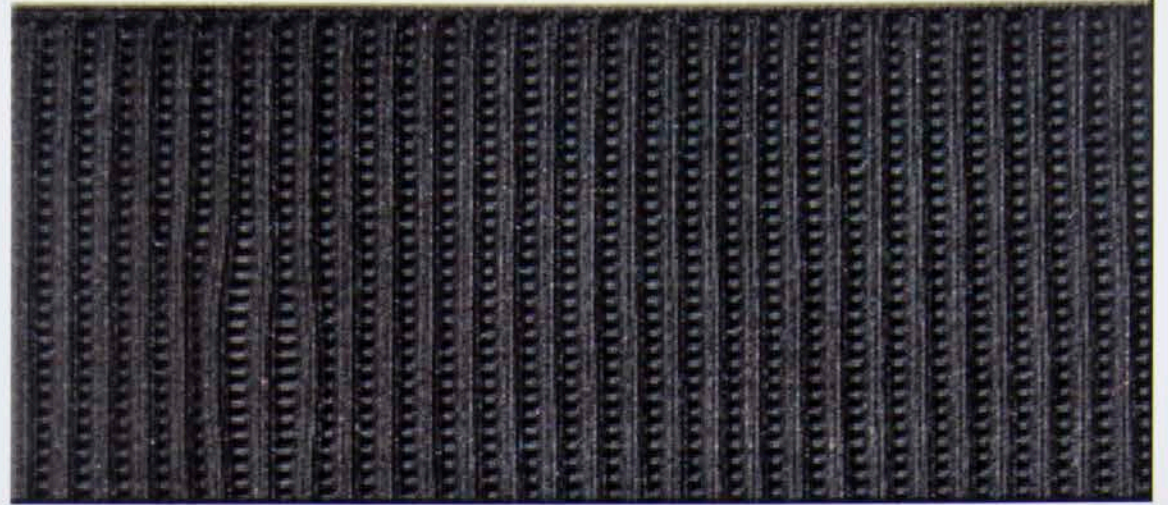
6159h  
Athletic Pads  
1", 1.5", 2"  
Black



1909  
Athletic Pads  
1", 1.5", 2"  
Black, White



# Athletic & Team Wear and Equipment



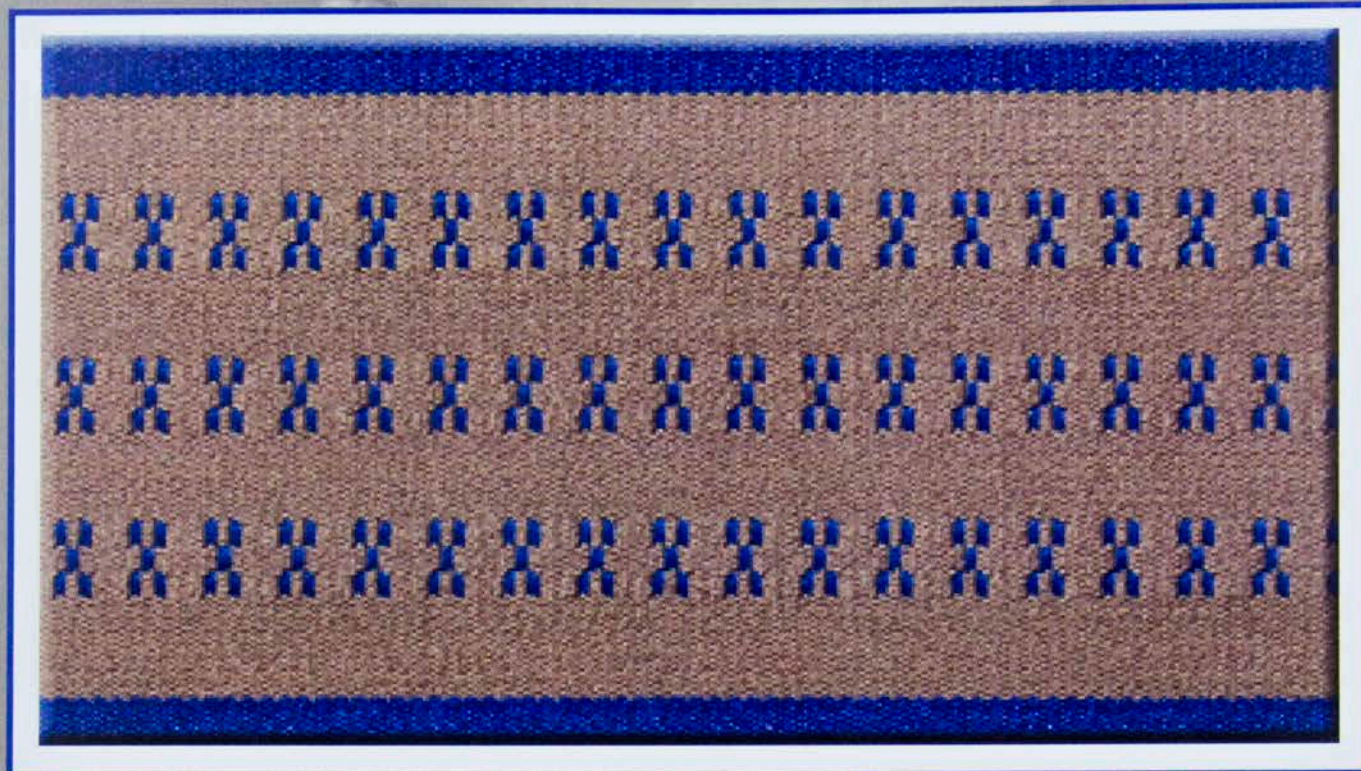
1130  
Knee & Wrist Support  
1", 1.5", 2"  
Black, White



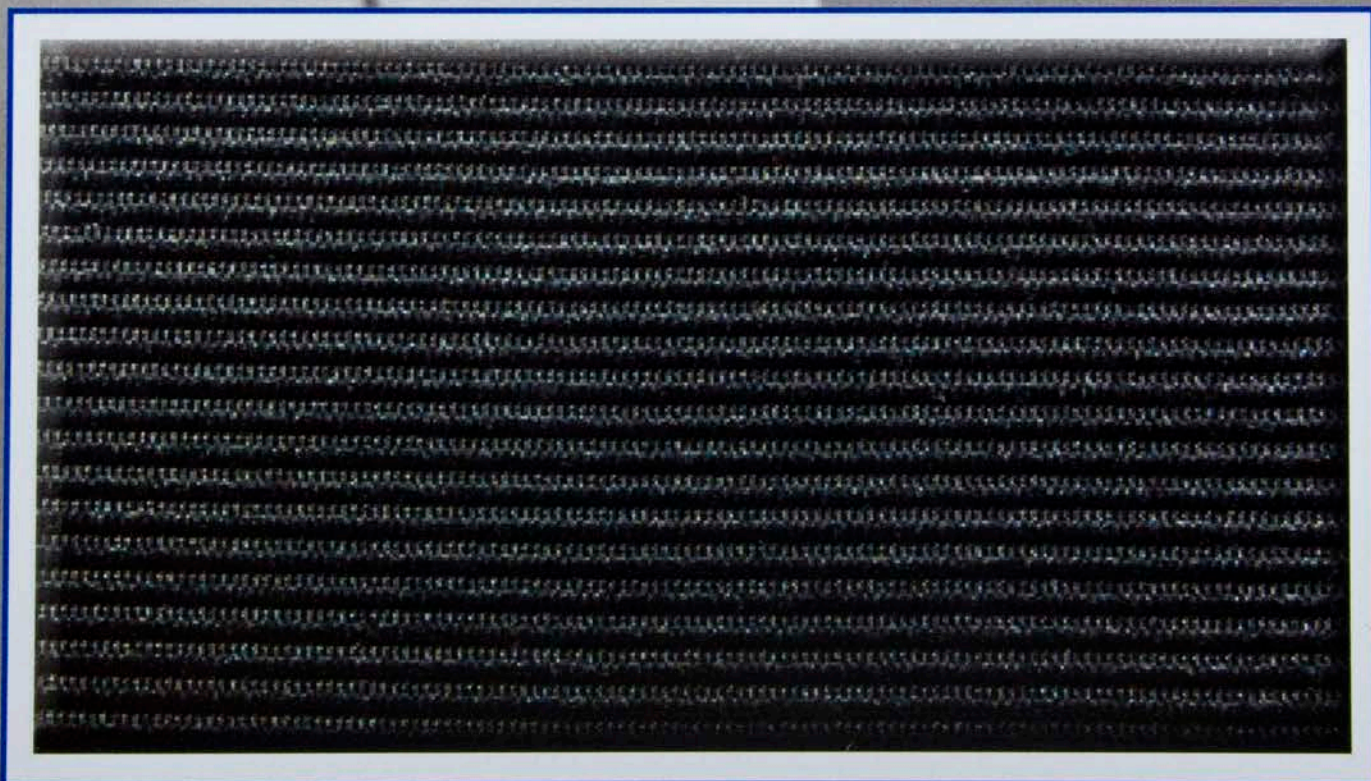
1140  
Knee & Wrist Support/Waistband  
1", 1.5", 2"  
Black, White



# Athletic & Team Wear and Equipment



6121  
Ankle Wrap  
3"  
Multi



675  
Ice Pack Wrap  
3"  
Black



# Industrial Safety

## *Gas Masks, Gloves, and Eyewear*



JH5p  
Gas Masks  
1"  
Black

6208  
Gas Masks  
1/2"  
Gray



6028  
Gas Masks  
1"  
Black



# Industrial Safety

## *Gas Masks, Gloves, and Eyewear*



6147c  
Eyewear  
3/8"  
Black

1418  
Glove Web  
2 1/4"  
Multi

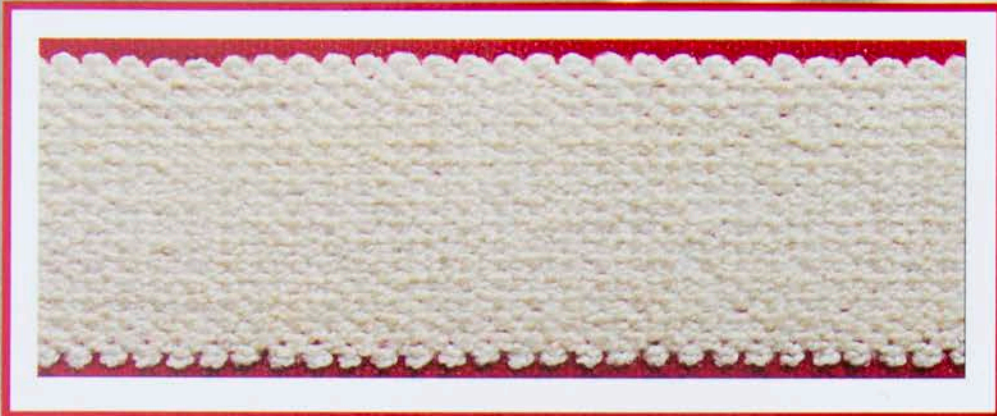


6210  
Eyewear  
1 1/4"  
Black

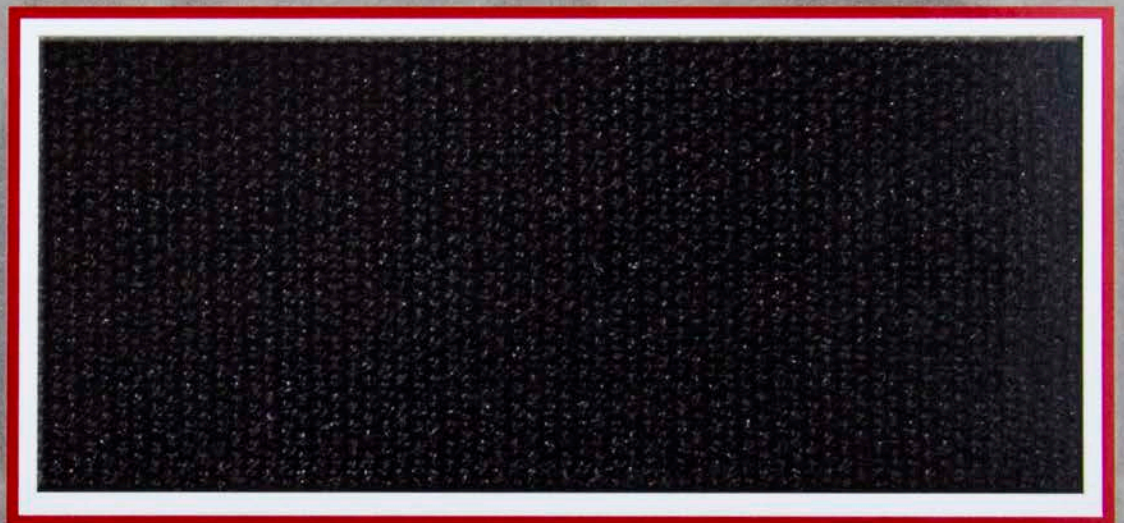


# Industrial Safety

## *Suspenders*



1FMS  
Fireman's Suspenders  
1.5"  
Colors



106H  
Trades Suspenders  
2"  
Colors

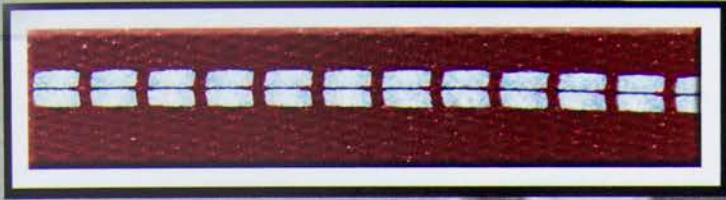


985  
Trades Suspenders  
2"  
Colors



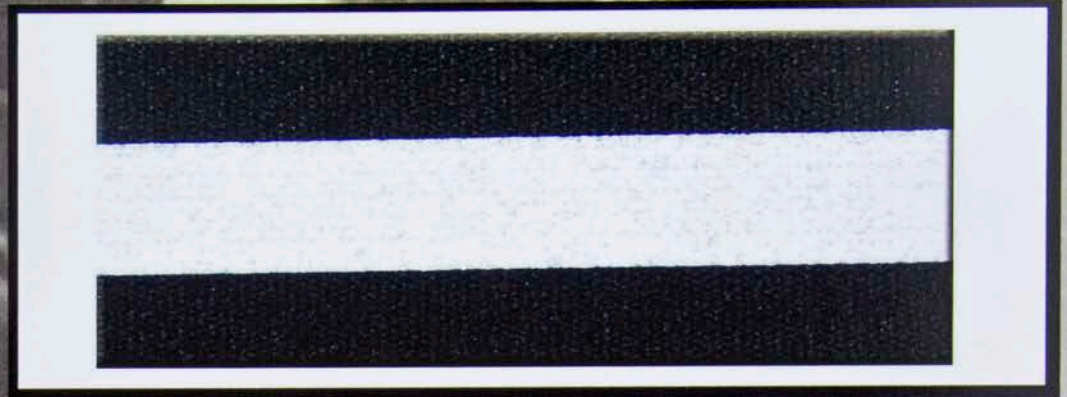
# Industrial Safety

## Reflective Tapes and Elastics

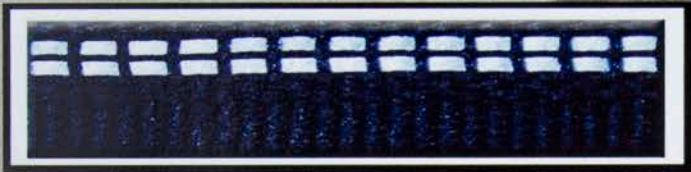


F03349  
1/2"  
Red

169



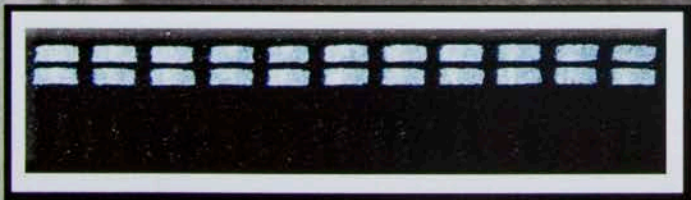
F03364  
1/2"  
Blue



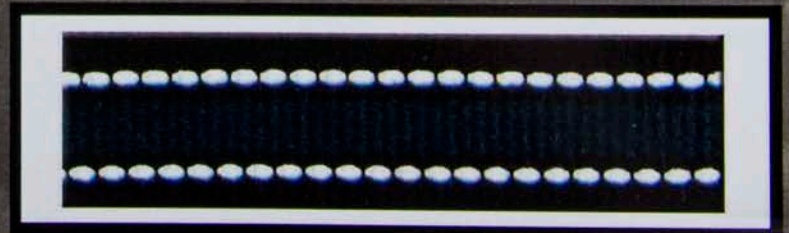
60625



F03348  
1/2"  
Black



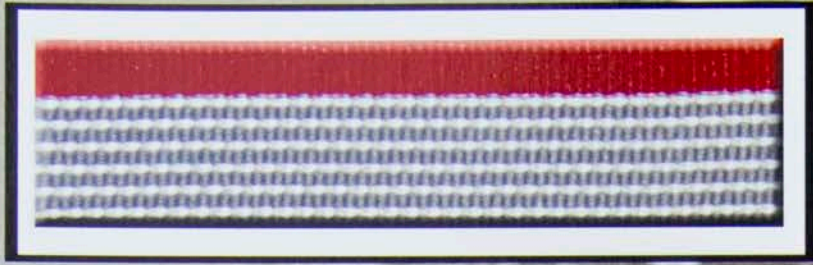
136



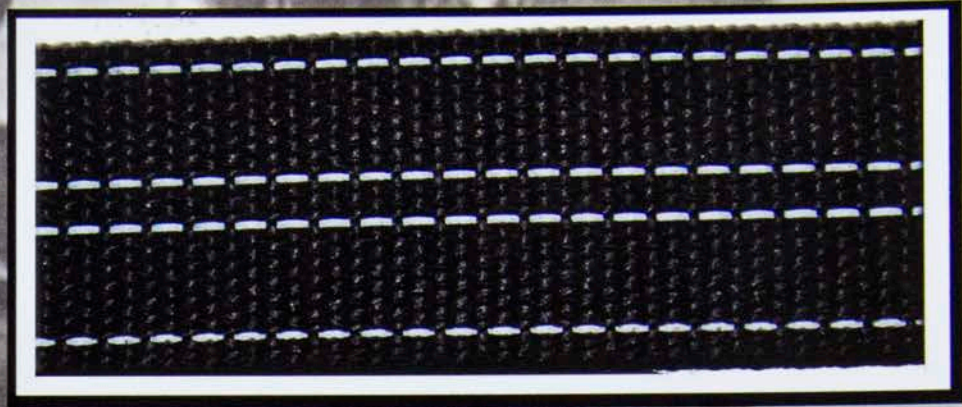


# Industrial Safety

## Reflective Tapes and Elastics



801



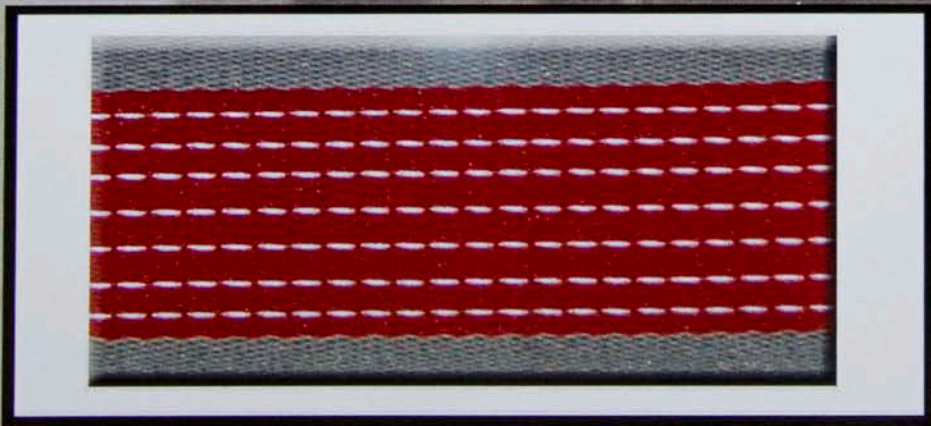
141



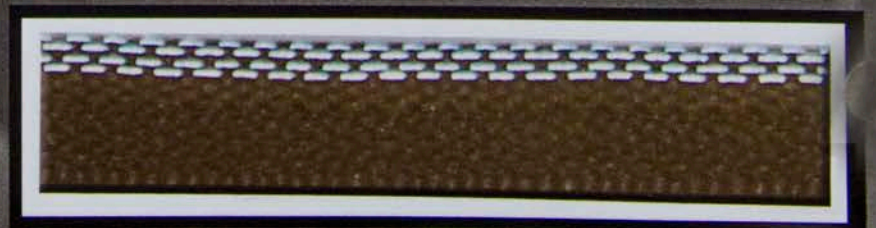
162



745



147

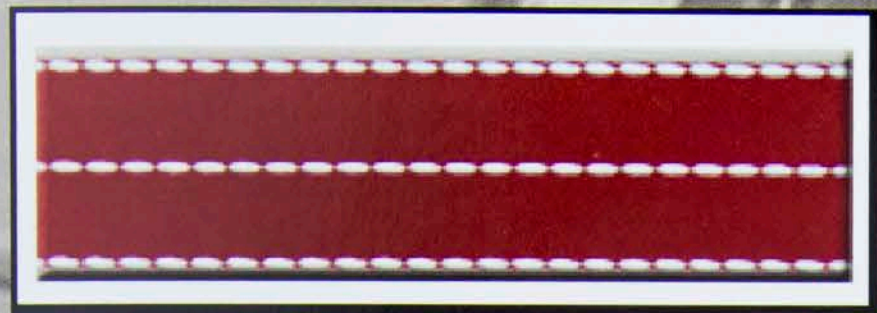


715



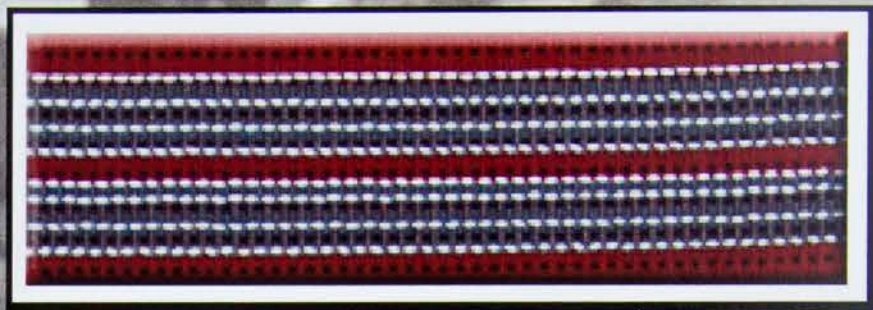
# Industrial Safety

## *Reflective Tapes and Elastics*



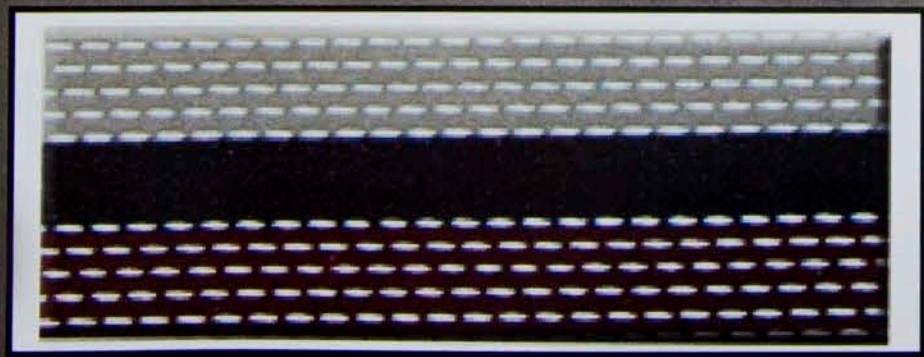
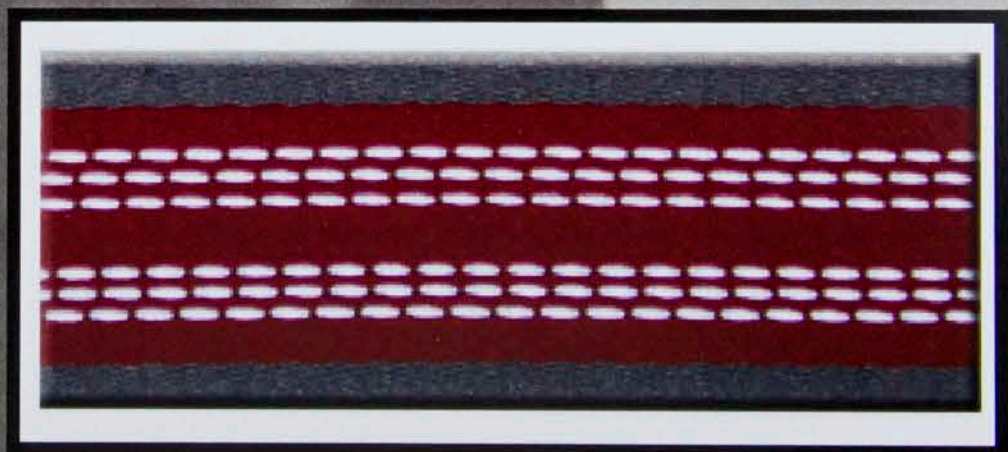
707

122



744

148

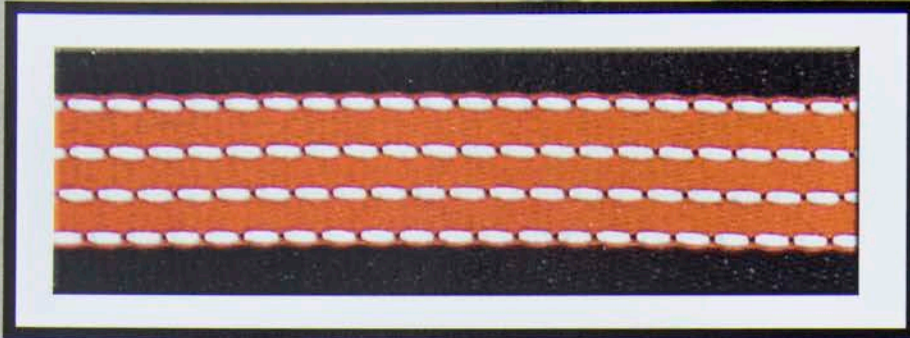


739



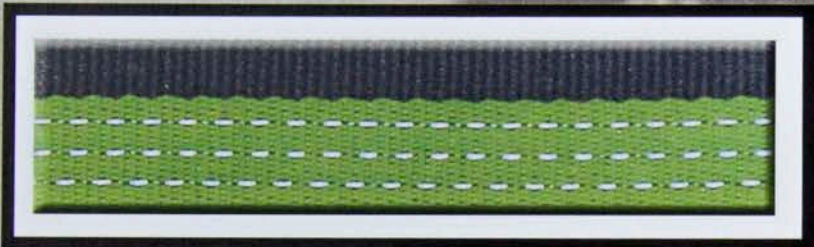
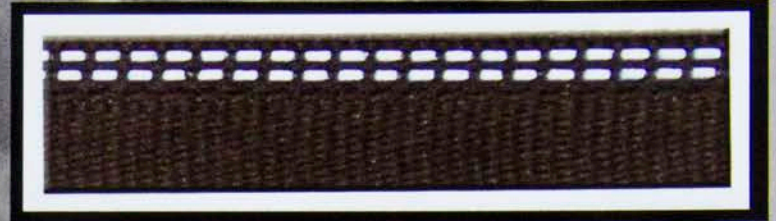
# Industrial Safety

## *Reflective Tapes and Elastics*



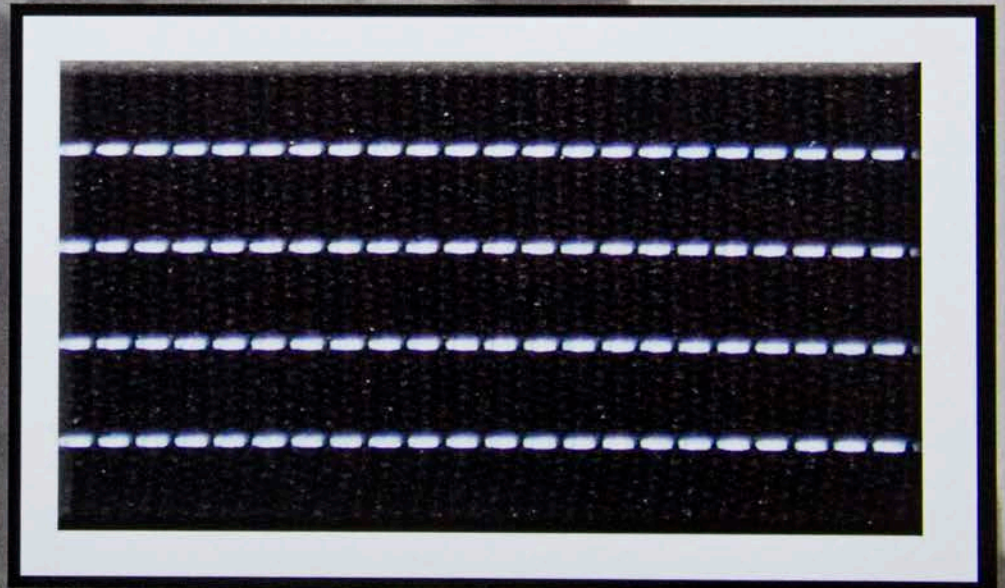
134

124

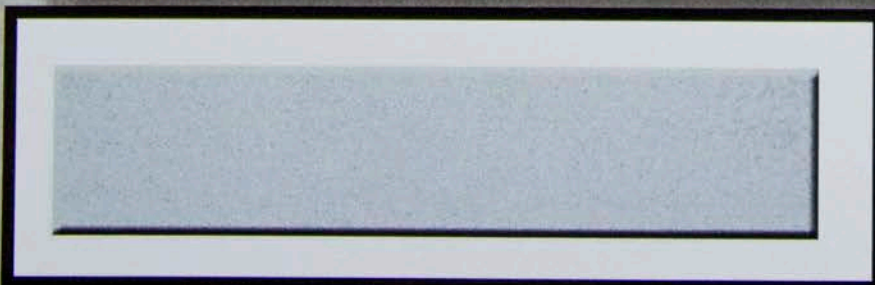


151

143



8910



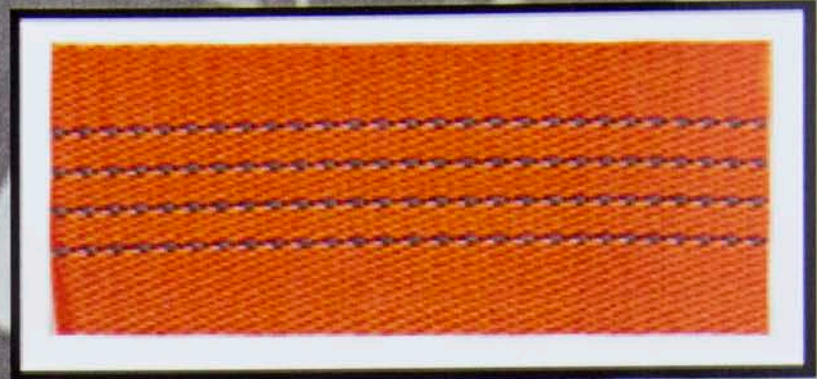
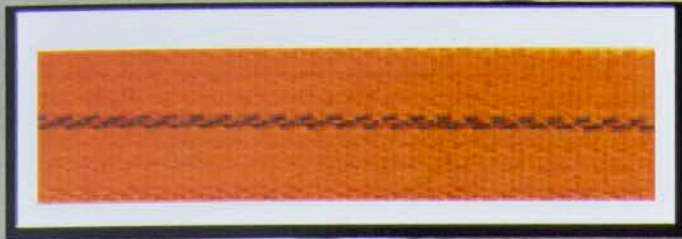


# Industrial Safety

## Reflective Tapes and Elastics

149

745



6054



153

